



LONSDALEMETAL Co. LTD

London N17 9QU

TEL: 020 8801 4221 FAX: 020 8801 1287

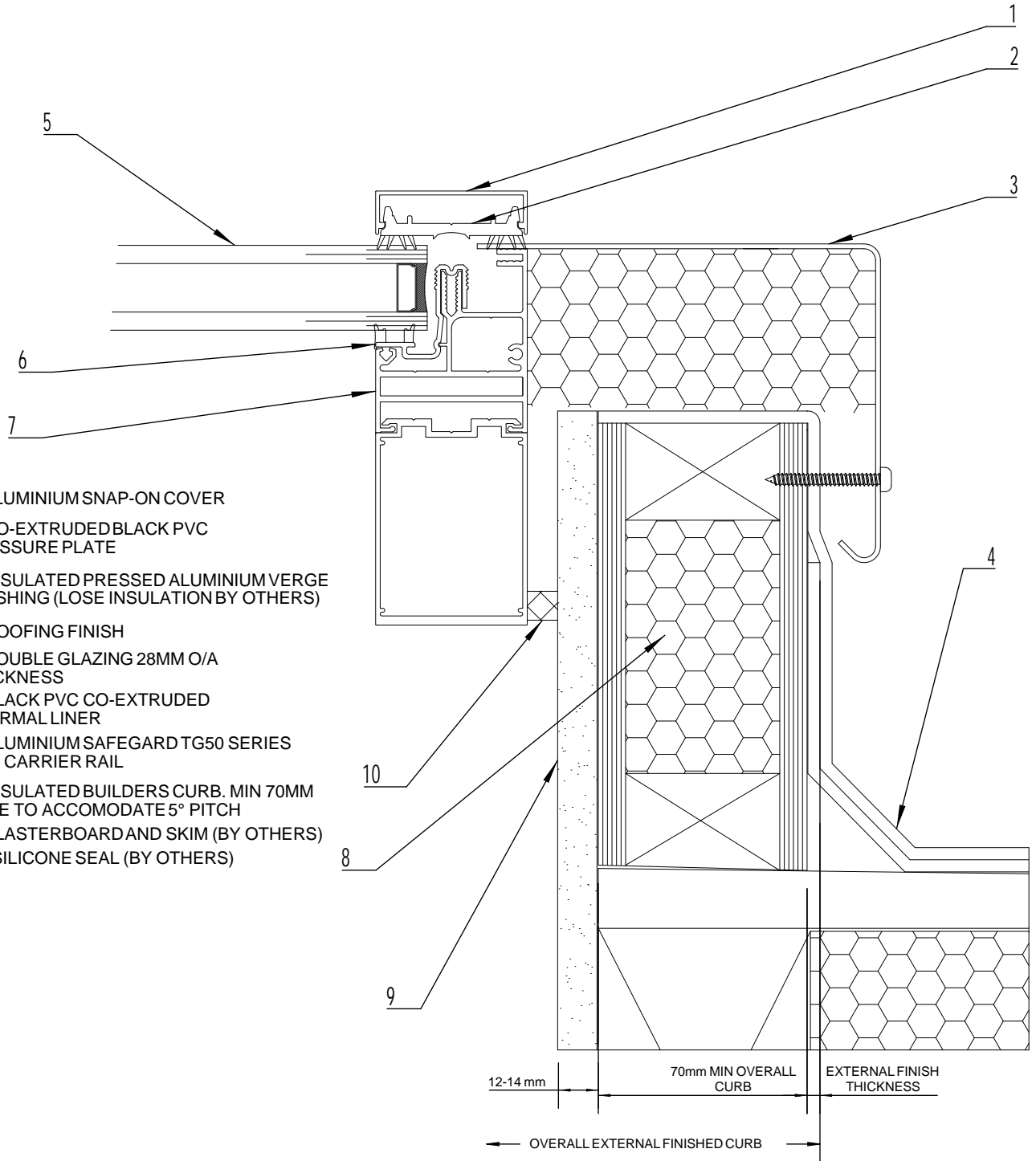
Email: info@lonsdalemetal.co.uk

www.lonsdalemetal.co.uk

DRAWING TITLE:

SAFEGARDTG50 DOUBLE GLAZING SIDE CURB DETAIL WITH ALUMINIUM FLASHING

SCALE: 1:2 AT A4



- 1. ALUMINIUM SNAP-ON COVER
- 2. CO-EXTRUDED BLACK PVC PRESSURE PLATE
- 3. INSULATED PRESSED ALUMINIUM VERGE FLASHING (LOSE INSULATION BY OTHERS)
- 4. ROOFING FINISH
- 5. DOUBLE GLAZING 28MM O/A THICKNESS
- 6. BLACK PVC CO-EXTRUDED THERMAL LINER
- 7. ALUMINIUM SAFEGARD TG50 SERIES END CARRIER RAIL
- 8. INSULATED BUILDERS CURB. MIN 70MM WIDE TO ACCOMODATE 5° PITCH
- 9. PLASTERBOARD AND SKIM (BY OTHERS)
- 10. SILICONE SEAL (BY OTHERS)

PROJECT: TECHNICAL CATALOGUE DETAIL SAFEGARDTG50	REV	DATE		DRAWN	VM
				DATE	07/2024
				DRG. No.	TG-82T